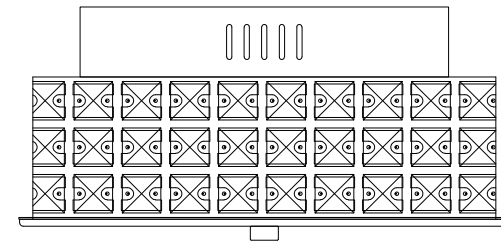
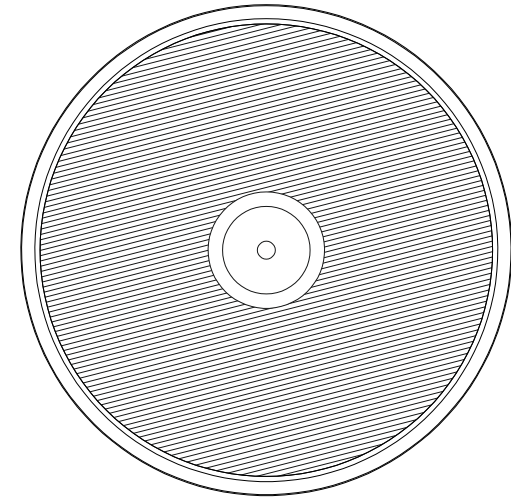
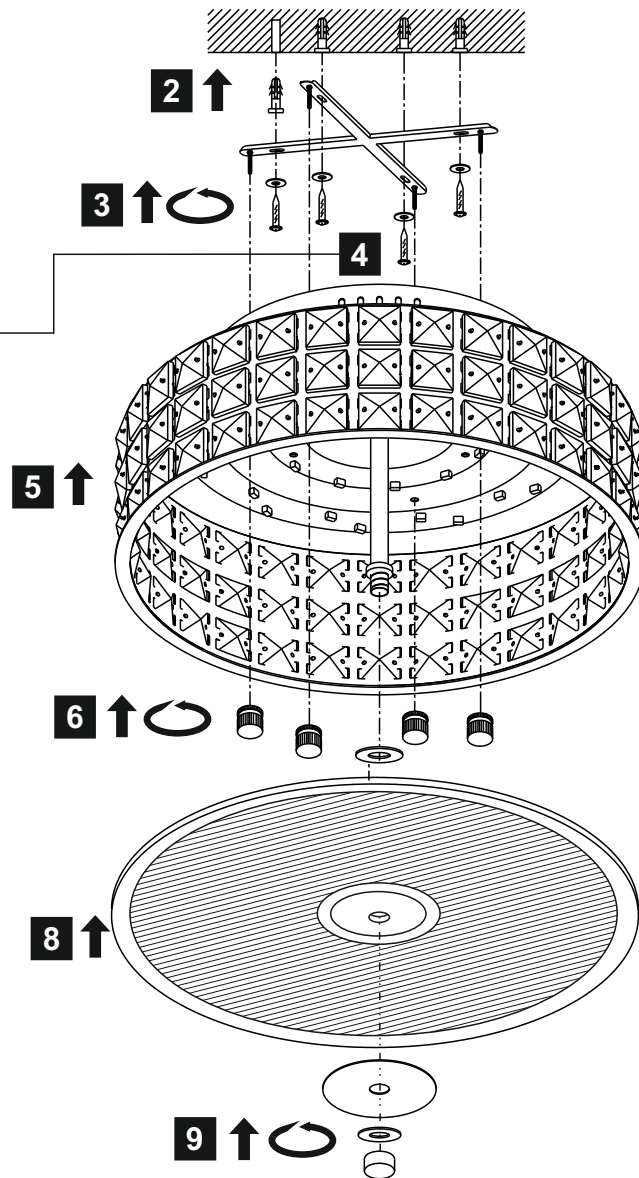
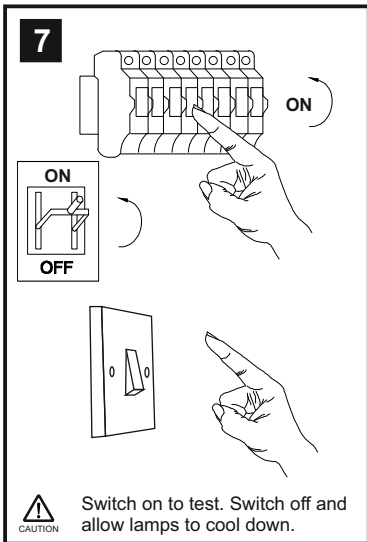
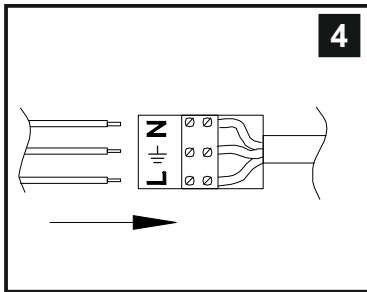
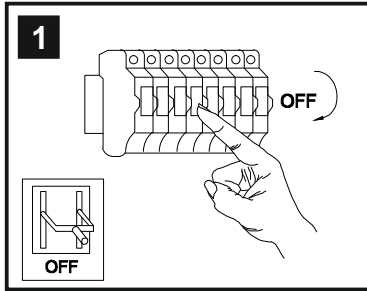


INSTALLATION INSTRUCTIONS

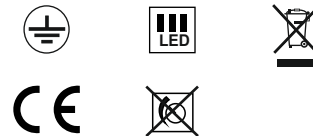
(ILLUSTRATIONS ARE FOR GUIDANCE PURPOSES ONLY.
ACTUAL PRODUCT MAY DIFFER FROM THE IMAGES SHOWN)



- (1) Prior to installation carefully unpack and check all the components and accessories are as per details enclosed.
- (2) These instructions should be used in conjunction with the installation guidelines included.



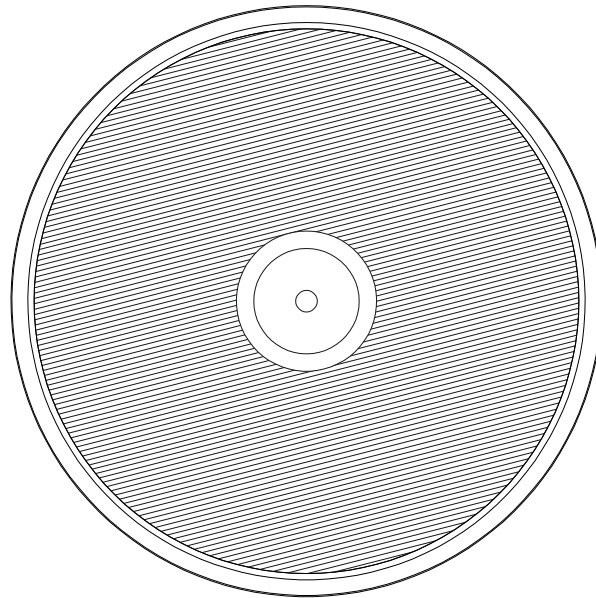
Voltage: 100 ~ 230V - 50/60Hz
Lampholder: LED
Lamps: 36 x 0.5W Max



Hawthorne IL80020

diyas®

LIST OF COMPONENTS



ILG80020

Accessories

Opal Glass Diffuser	1 Pc	

Installation Pack

White Gloves	2 Pcs	
Installation Instructions	2 Pages	
Installation Guidelines	2 Pages	
Fixing Screw and Plugs	4 Sets	
Glass Fixing Nut	1 Pc	
Glass Fixing Plate	1 Pc	

Contents Checked By

Hawthorne IL80020

