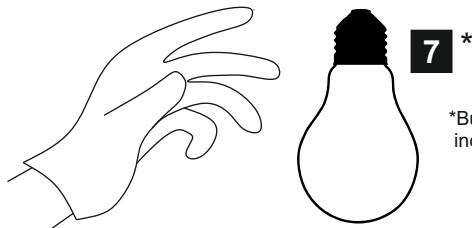
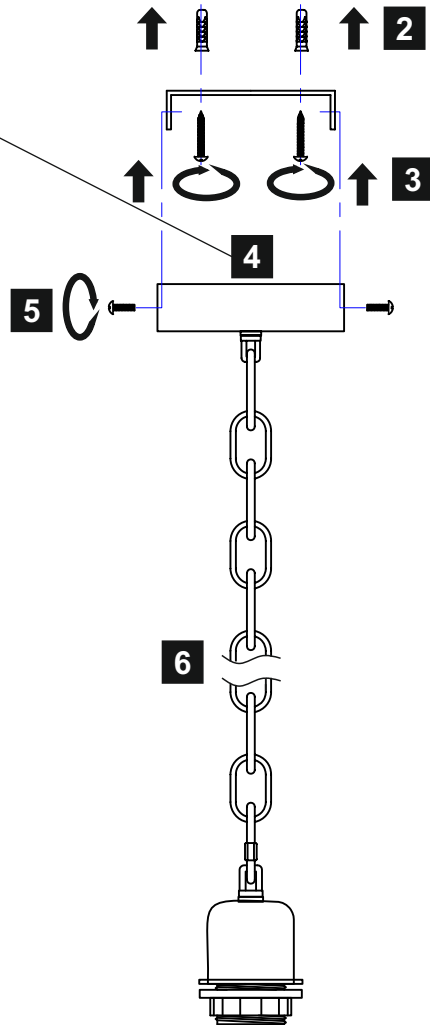
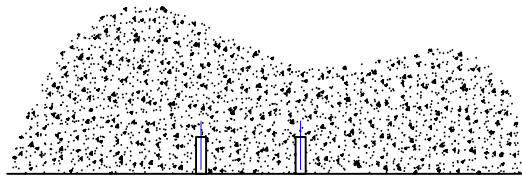
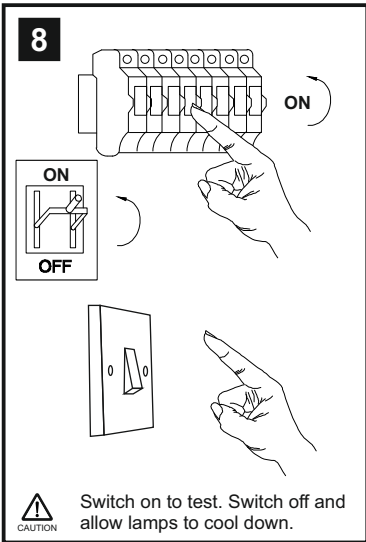
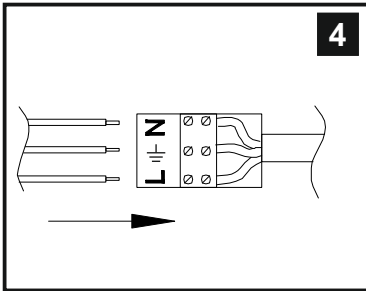
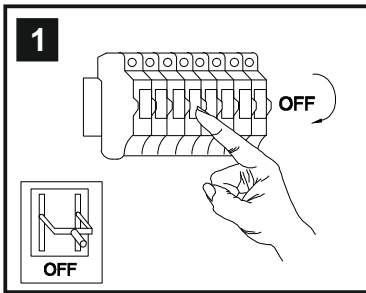


# INSTALLATION INSTRUCTIONS

(ILLUSTRATIONS ARE FOR GUIDANCE PURPOSES ONLY. ACTUAL PRODUCT MAY DIFFER FROM THE IMAGES SHOWN)



\*Bulb may not be included.

## Installation Pack

White Gloves	2 Pcs	
Installation Instructions	1 Page	
Installation Guidelines	2 Pages	
Fixing Plugs & Screws	2 Sets	

Contents Checked By



(1) Prior to installation carefully unpack and check all the components and accessories are as per details enclosed.  
 (2) These instructions should be used in conjunction with the installation guidelines included.

Voltage: 220-240V 50/60Hz  
 Lampholder: E27  
 Lamps: 1 x 100W Max



Kudo IL60000/15/16

**diy**as®