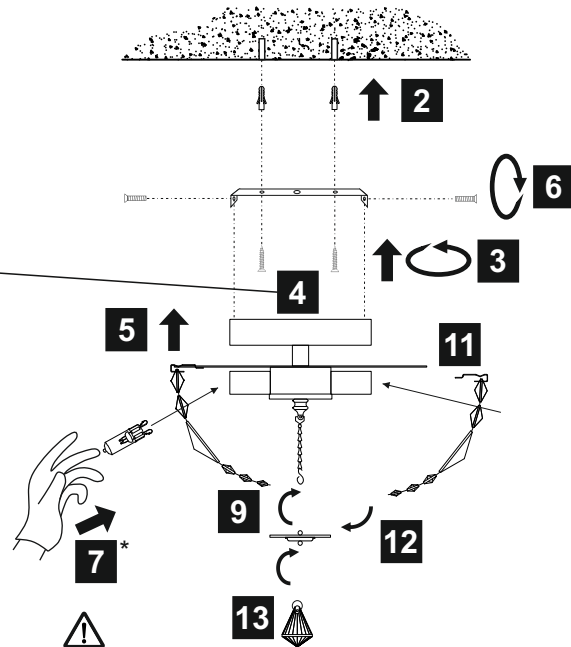
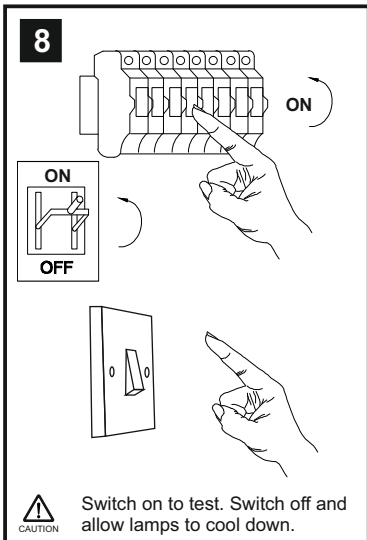
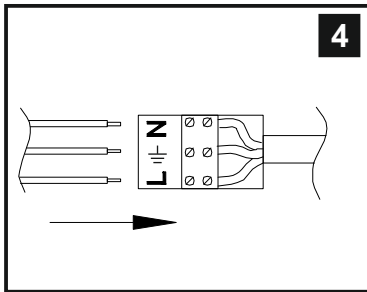
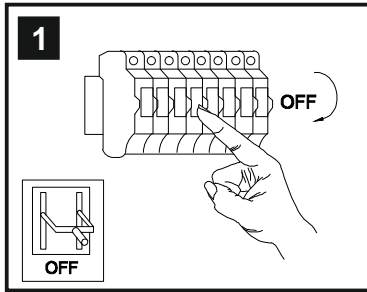


INSTALLATION INSTRUCTIONS

(ILLUSTRATIONS ARE FOR GUIDANCE PURPOSES ONLY.
ACTUAL PRODUCT MAY DIFFER FROM THE IMAGES SHOWN)

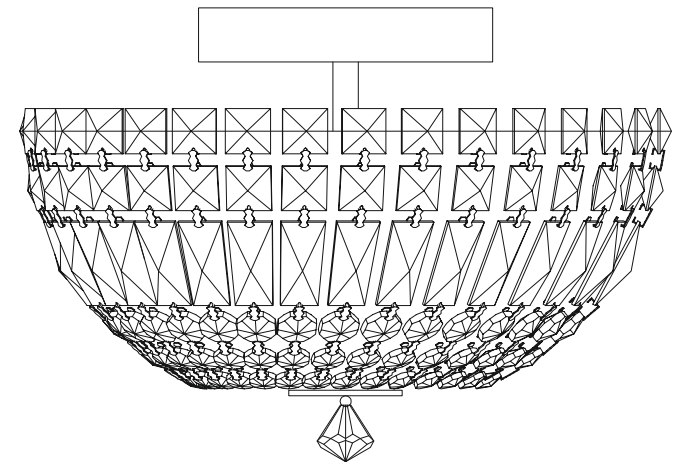
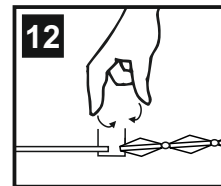
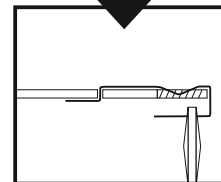
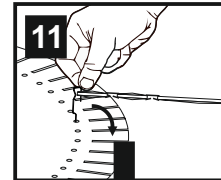
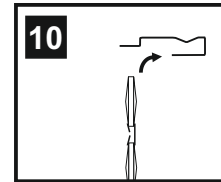


- (1) Prior to installation carefully unpack and check all the components and accessories are as per details enclosed.
- (2) These instructions should be used in conjunction with the installation guidelines included.



Please use the gloves provided.

* Lamps may not be included.
Please ensure maximum wattage is not exceeded.



Voltage: 230V - 50/60Hz
Lampholder: G9
Lamps: 3 x 33W Max



COMPATIBLE



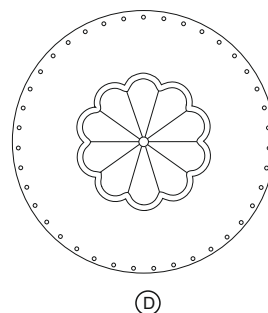
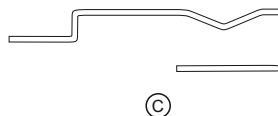
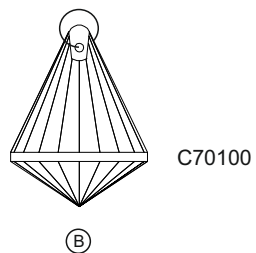
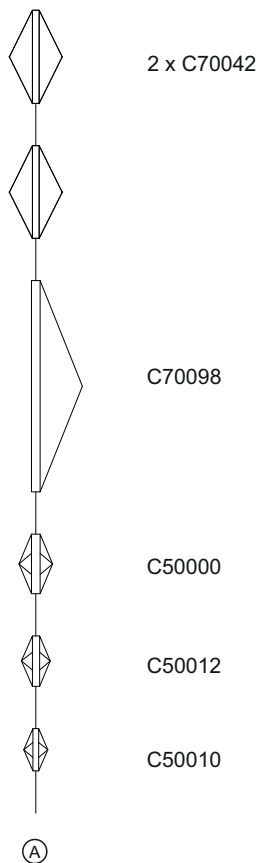
WITH SUITABLE DIMMER/LAMP



Georgina IL31480

diyás®

LIST OF COMPONENTS



Accessories		
Crystal Strand A	33 Pcs	
Crystal Drop B	1 Pc	
Crystal Hanging Pin C	33 Pcs	
Crystal Fixing Plate D	1 Pc	

Installation Pack		
White Gloves	2 Pcs	
Installation Instructions	2 Pages	
Installation Guidelines	2 Pages	
Fixing Screw and Plugs	2 Sets	
Additional Crystal Links	3 Pcs Each	

Contents Checked By	
----------------------------	--

Georgina IL31480

