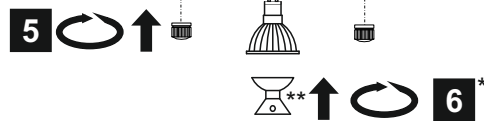
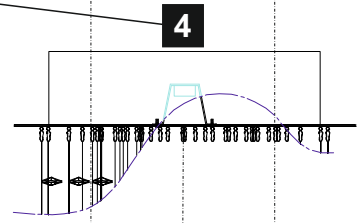
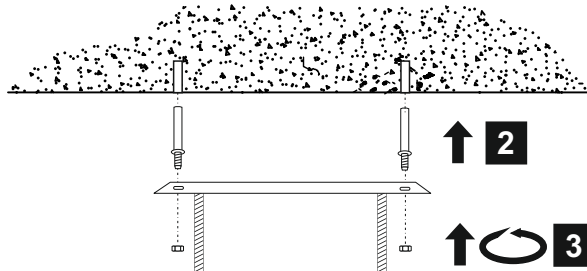
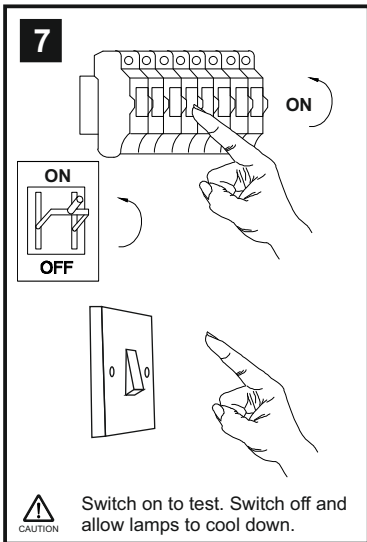
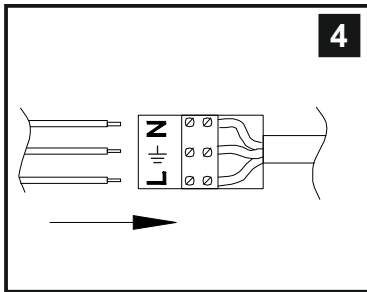
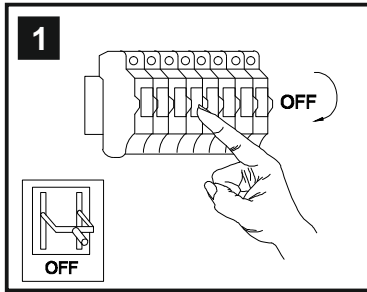


# INSTALLATION INSTRUCTIONS

(ILLUSTRATIONS ARE FOR GUIDANCE PURPOSES ONLY.  
ACTUAL PRODUCT MAY DIFFER FROM THE IMAGES SHOWN)

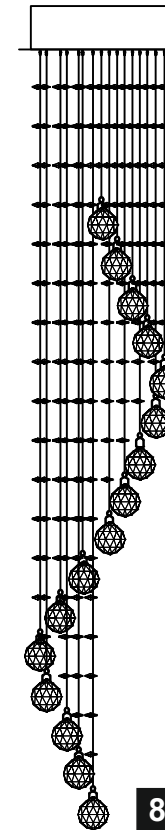
- ⚠ (1) Prior to installation carefully unpack and check all the components and accessories are as per details enclosed.
- (2) These instructions should be used in conjunction with the installation guidelines included.



⚠ Please use the gloves provided.

\* Lamps may not be included. Please ensure maximum wattage is not exceeded.

\*\* For best results ensure tool is at room temperature.



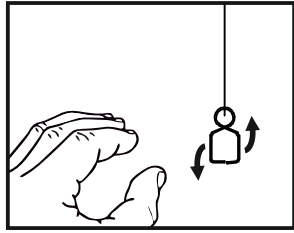
For crystal installation instructions please refer to page two.

Voltage: 230V - 50/60Hz  
Lampholder: GU10  
Lamps: 1 x 50W Max

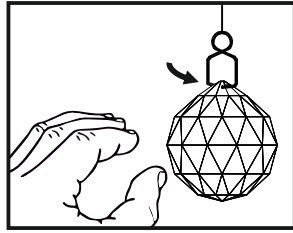


Colorado IL30782

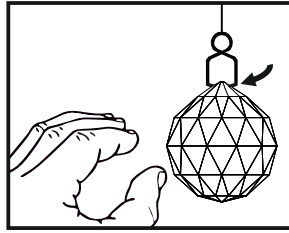
diyás®



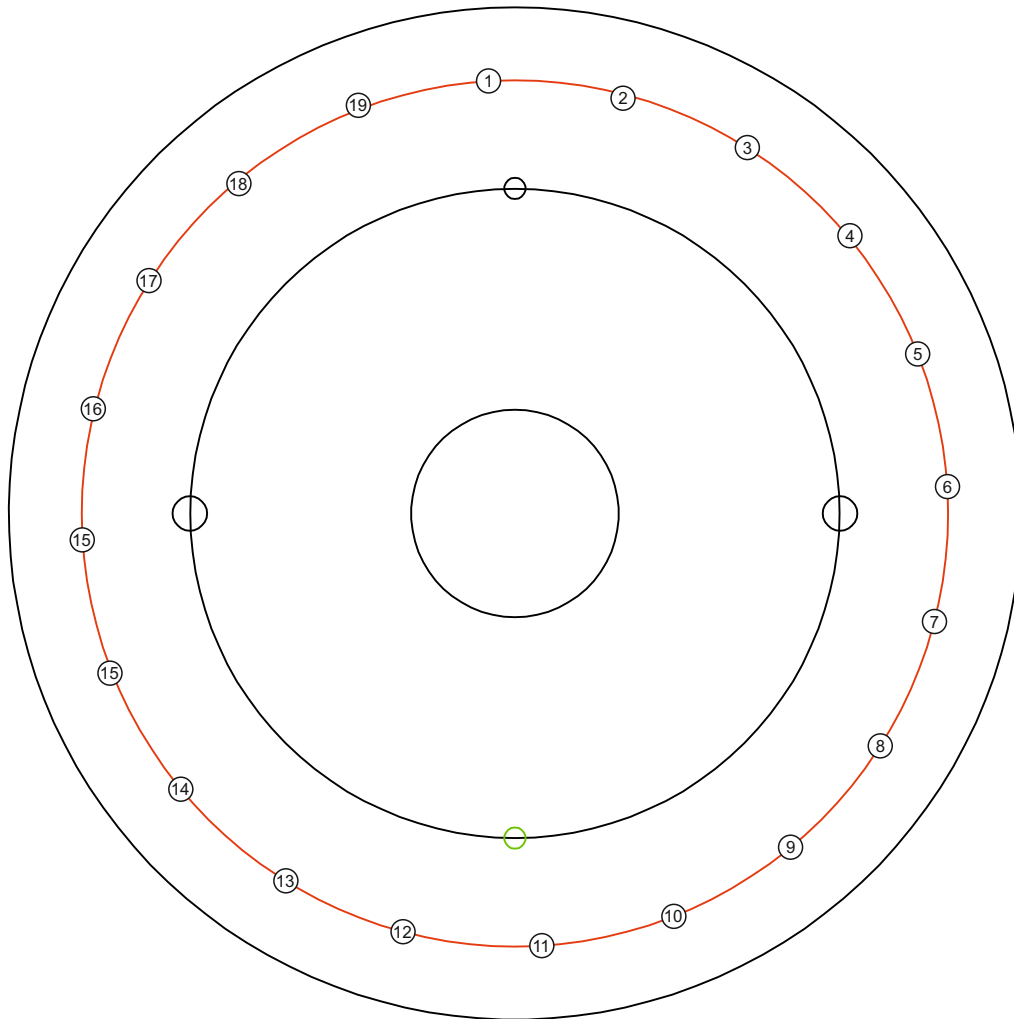
Gently prise the lower part of the hanging clip apart.



Insert one side of the clip into the hole at the top of the crystal.



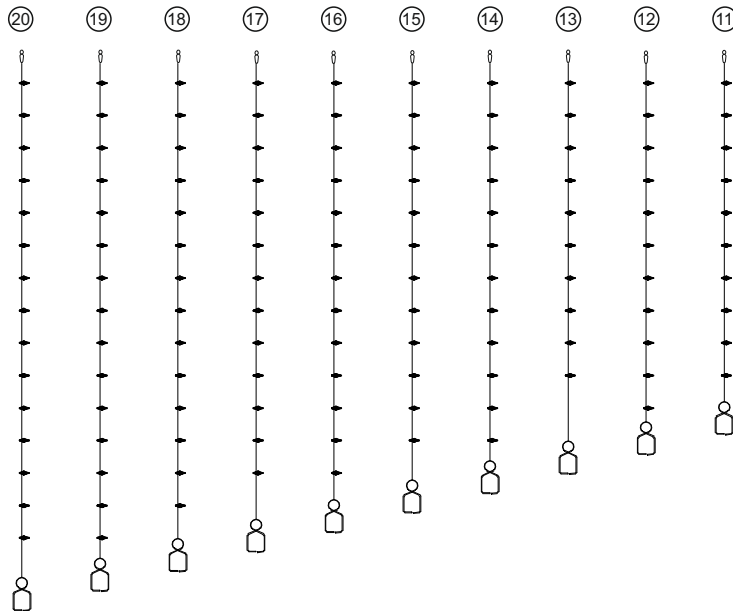
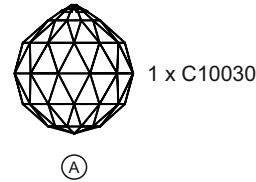
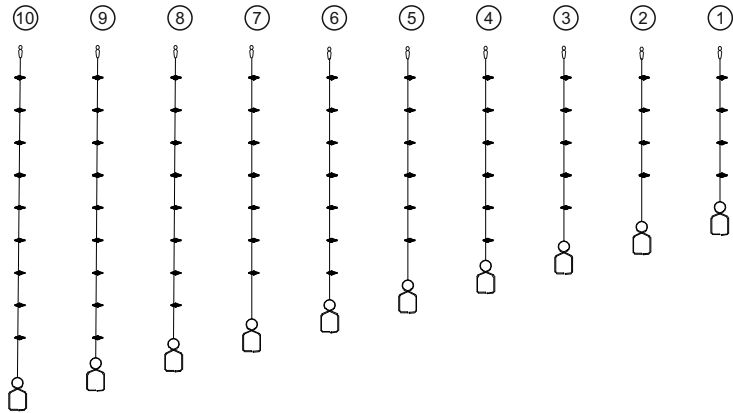
Insert the second side of the clip into the adjacent hole until the clip clicks into place.



Colorado IL30782

**diy**as®

# LIST OF COMPONENTS



Crystal Accessories		
Crystal A (30mm)	30 Pcs	

Installation Pack		
White Gloves	2 Pcs	
Installation Instructions	3 Pages	
Installation Guidelines	2 Pages	
Heavy Duty Bolts	2 Sets	
Additional Crystal Links	3 Pcs each	
Lamp Fixing Tool	1 Pc	

<b>Contents Checked By</b>	
----------------------------	--

**Colorado IL30782**