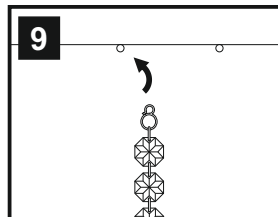
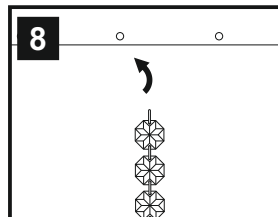
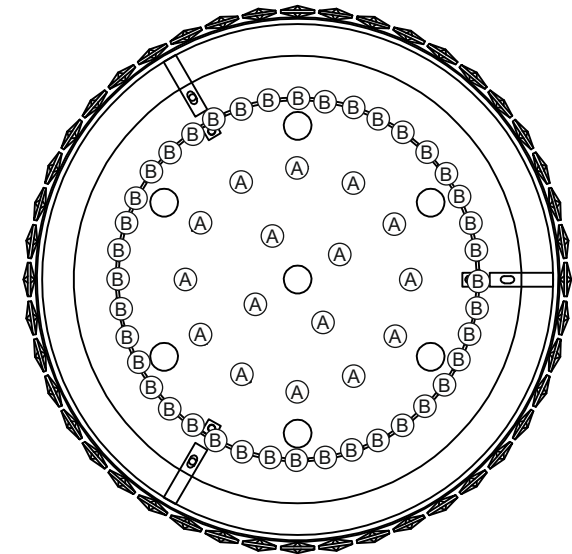
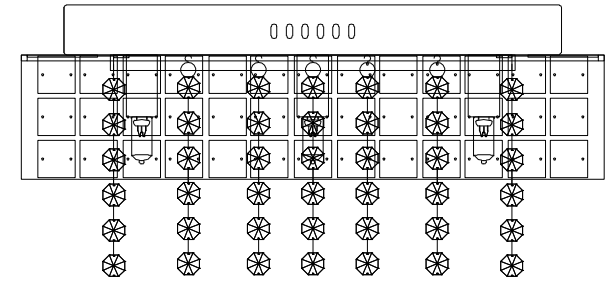
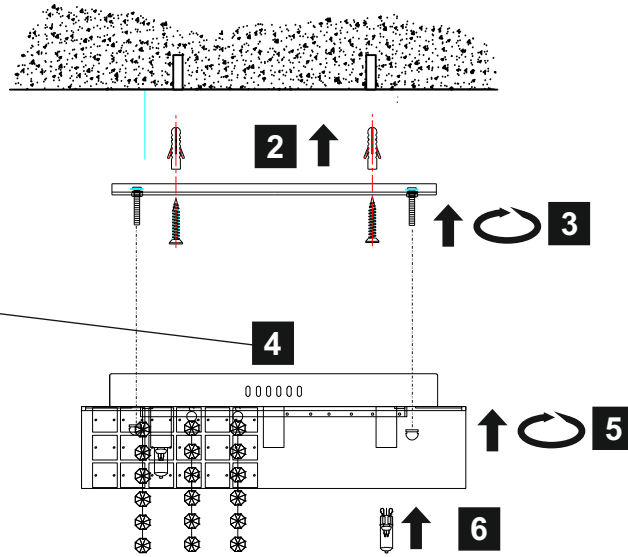
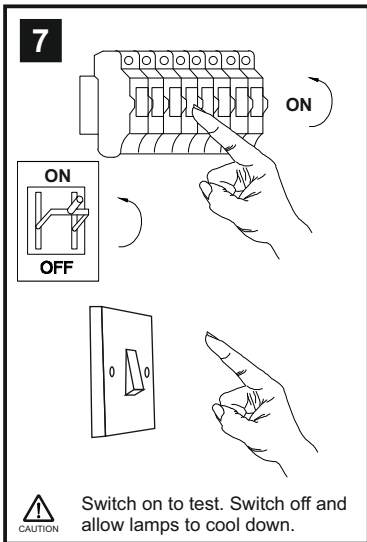
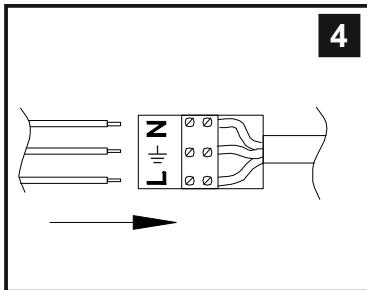
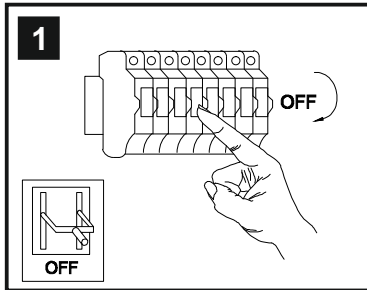


INSTALLATION INSTRUCTIONS

(ILLUSTRATIONS ARE FOR GUIDANCE PURPOSES ONLY.
ACTUAL PRODUCT MAY DIFFER FROM THE IMAGES SHOWN)



- (1) Prior to installation carefully unpack and check all the components and accessories are as per details enclosed.
- (2) These instructions should be used in conjunction with the installation guidelines included.



Please use the gloves provided.

* Lamps may not be included.
Please ensure maximum wattage is not exceeded.

Voltage: 220-240V 50/60Hz
Lampholder: G9
Lamps: 7 x 33W Max



COMPATIBLE

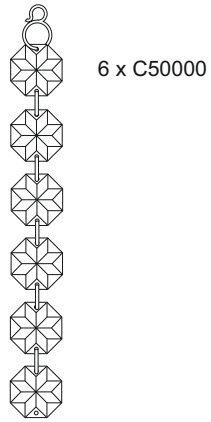
WITH SUITABLE
LAMP/DIMMER



Edison IL31151

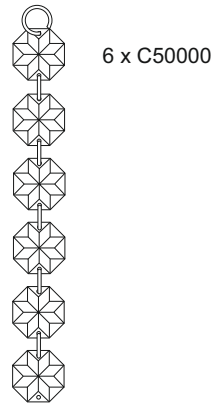
diyás®

LIST OF COMPONENTS



6 x C50000

(A)



6 x C50000

(B)

Crystal Accessories

Crystal Strand A	16 Pcs	
Crystal Strand B	40 Pcs	

Installation Pack

White Gloves	2 Pcs	
Installation Instructions	2 Pages	
Installation Guidelines	2 Pages	
Fixing Screw and Plug	2 Sets	

Contents Checked By

Edison IL31151

diyas®