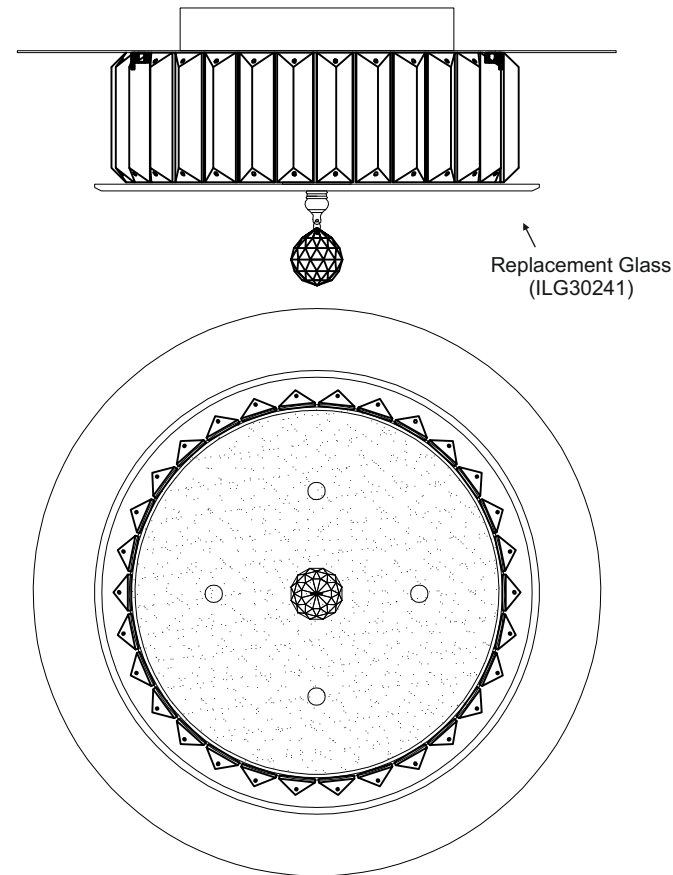
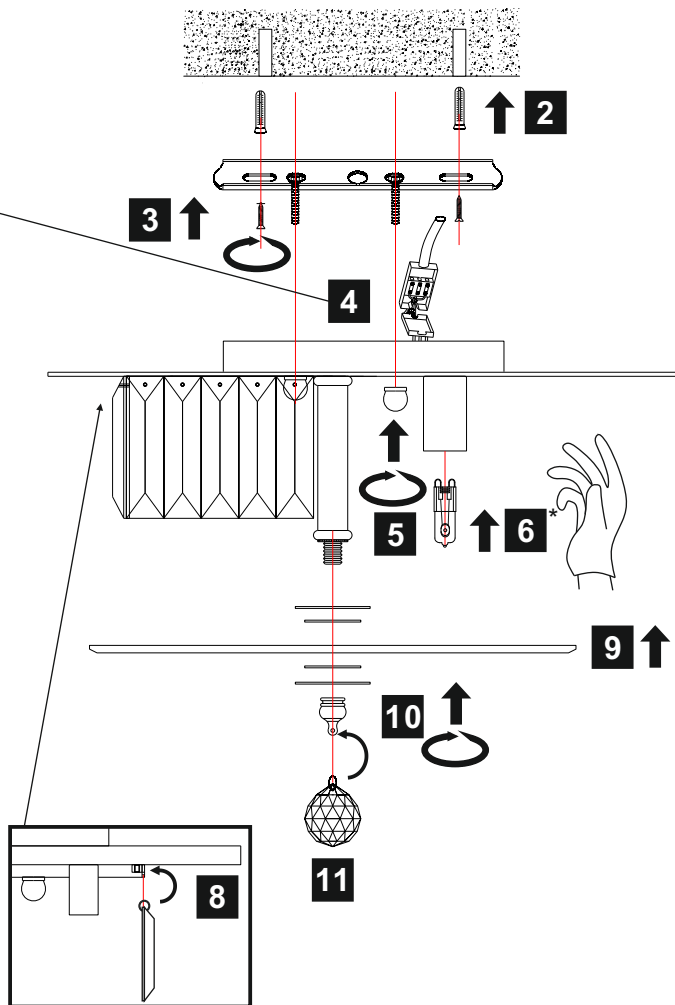
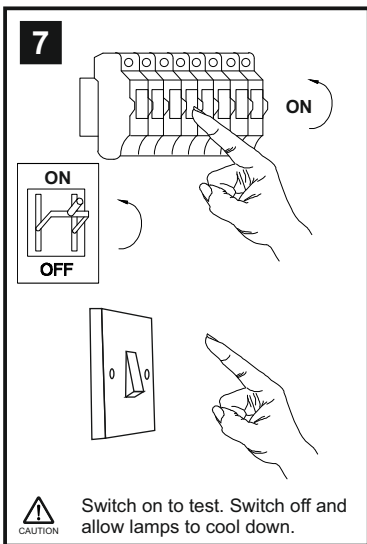
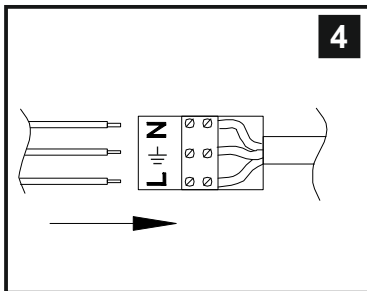
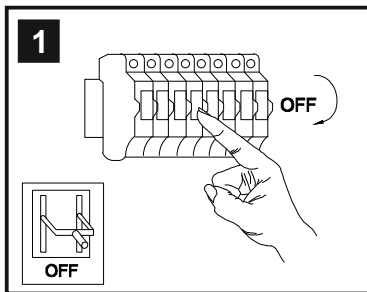


INSTALLATION INSTRUCTIONS

(ILLUSTRATIONS ARE FOR GUIDANCE PURPOSES ONLY.
ACTUAL PRODUCT MAY DIFFER FROM THE IMAGES SHOWN)



- (1) Prior to installation carefully unpack and check all the components and accessories are as per details enclosed.
- (2) These instructions should be used in conjunction with the installation guidelines included.



Replacement Glass
(ILG30241)



Please use the gloves provided.

* Lamps may not be included. Please ensure maximum wattage is not exceeded.

Voltage: 230V - 50/60Hz
Lampholder: G9
Lamps: 4 x 33W Max



COMPATIBLE



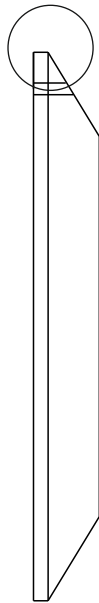
WITH SUITABLE DIMMER/LAMP



Tosca IL30241 / IL30243

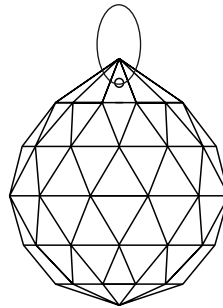
diyas®

LIST OF COMPONENTS



C70093

(A)



C10030

(B)

Crystal Accessories

Crystal A	30 Pcs	
Crystal B	1 Pcs	

Installation Pack

White Gloves	2 Pcs	
Installation Instructions	2 Pages	
Installation Guidelines	2 Pages	
Additional Crystal Links	3 Pcs Each	
Fixing Screw and Plug	2 Sets	

Contents Checked By

Tosca IL30241 / IL30243

