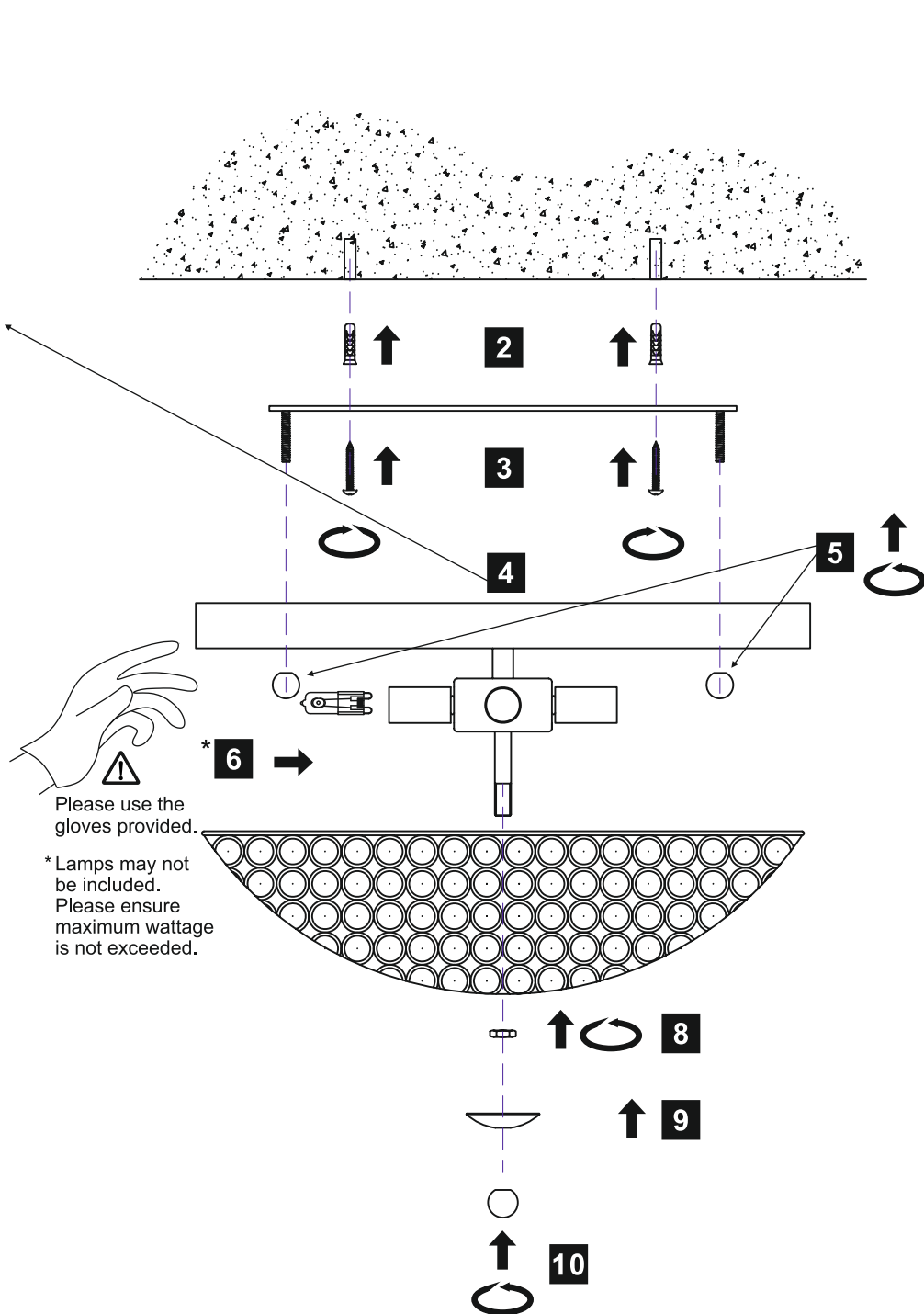
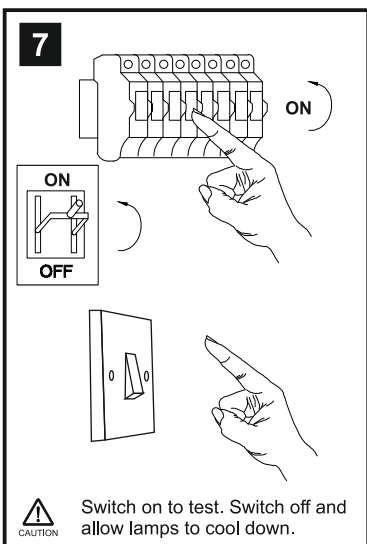
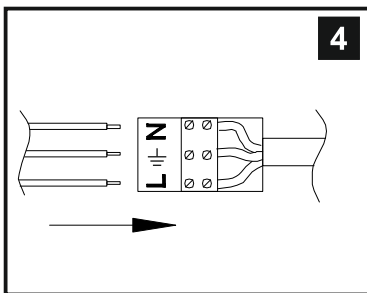
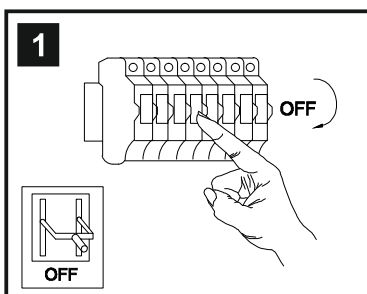


INSTALLATION INSTRUCTIONS

(ILLUSTRATIONS ARE FOR GUIDANCE PURPOSES ONLY. ACTUAL PRODUCT MAY DIFFER FROM THE IMAGES SHOWN)



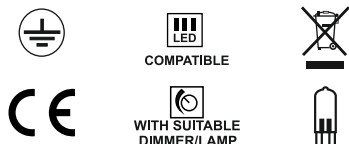
Installation Pack

White Gloves	2 Pcs	
Installation Instructions	1 Page	
Installation Guidelines	2 Pgs	
Fixing Screws & Plugs	2 Sets	

Contents Checked By	
---------------------	--

- !** (1) Prior to installation carefully unpack and check all the components and accessories are as per details enclosed.
- (2) These instructions should be used in conjunction with the installation guidelines included.

Voltage: 230V - 50/60Hz
Lampholder: G9
Lamps: 4 x 33W Max



Ava IL30187 / IL30756

diyas[®]