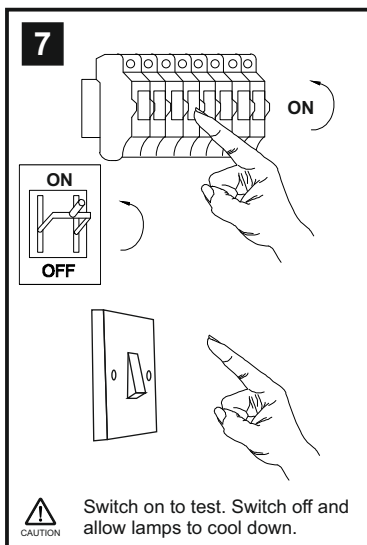
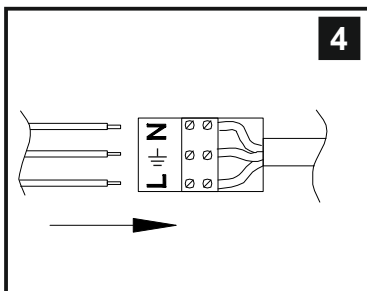
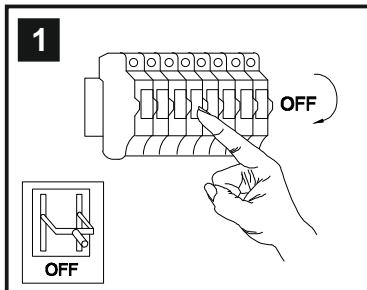


INSTALLATION INSTRUCTIONS

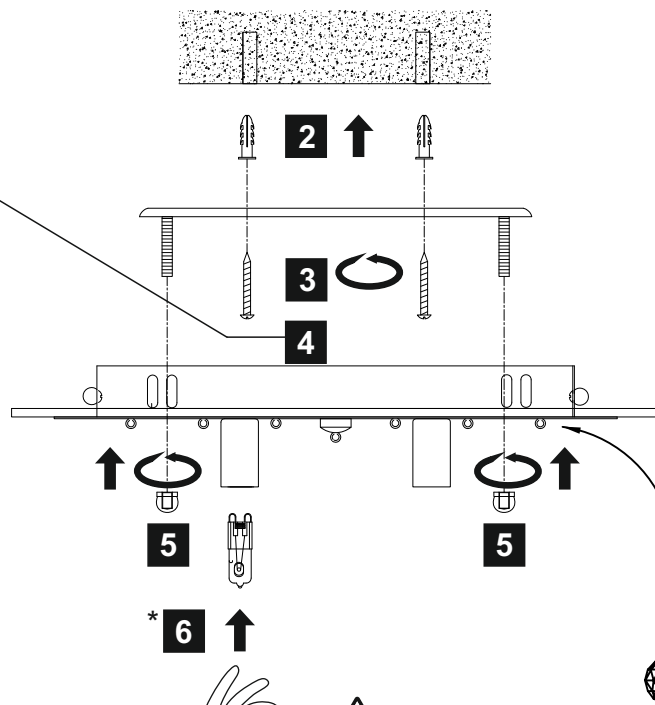
(ILLUSTRATIONS ARE FOR GUIDANCE PURPOSES ONLY.
ACTUAL PRODUCT MAY DIFFER FROM THE IMAGES SHOWN)



- (1) Prior to installation carefully unpack and check all the components and accessories are as per details enclosed.
- (2) These instructions should be used in conjunction with the installation guidelines included.

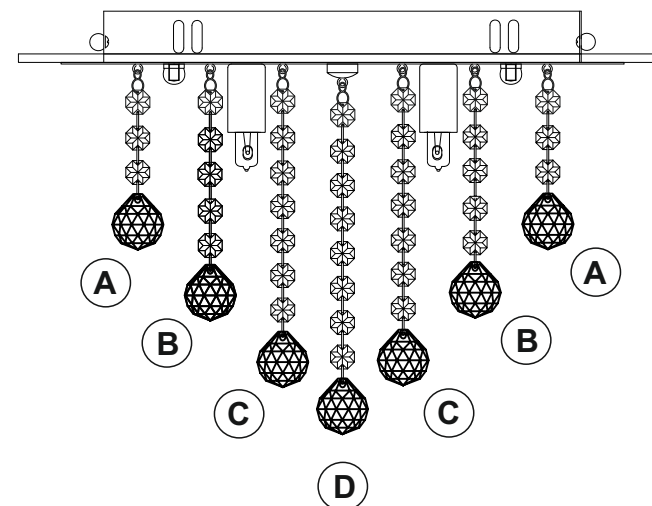


Switch on to test. Switch off and allow lamps to cool down.



Please use the gloves provided.

* Lamps may not be included.
Please ensure maximum wattage is not exceeded.



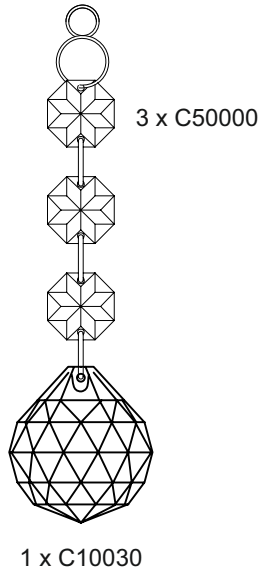
Voltage: 230V - 50/60Hz
Lampholder: G9
Lamps: 4 x 33W Max

CE

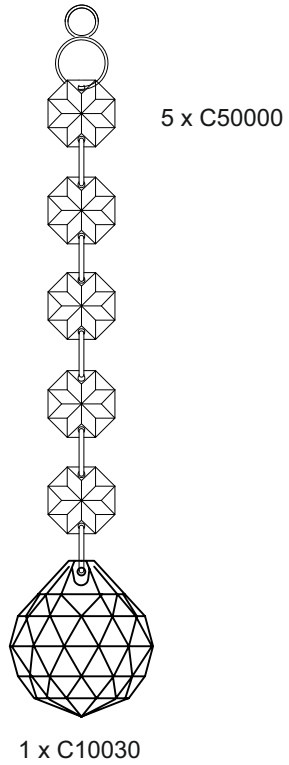
Atla IL3008 / IL30208

diyás®

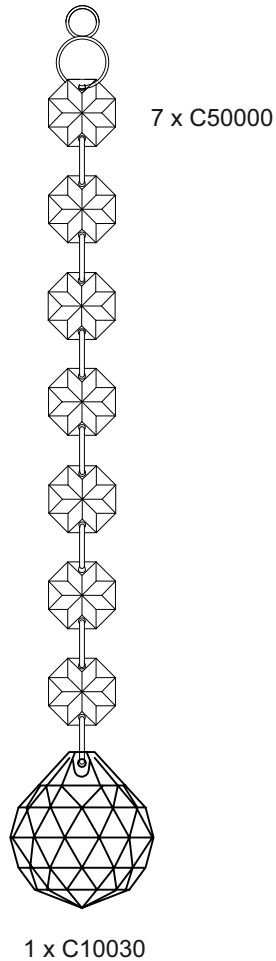
LIST OF COMPONENTS



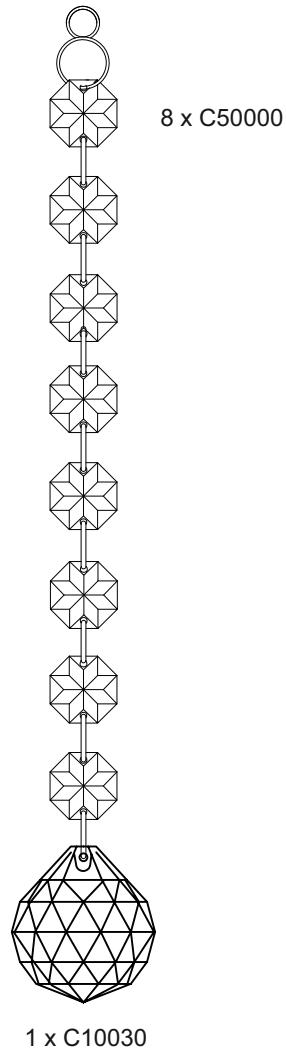
(A)



(B)



(C)



(D)

Crystal Accessories

Crystal Strand A	23 Pcs	
Crystal Strand B	12 Pcs	
Crystal Strand C	6 Pcs	
Crystal Strand D	1 Pc	

Installation Pack

White Gloves	2 Pcs	
Installation Instructions	2 Pages	
Installation Guidelines	2 Pages	
Additional Crystal Links	3 Pcs Each	
Fixing Screw & Plug	2 Sets	

Contents Checked By

Atla IL30008 / IL30208

diyas®